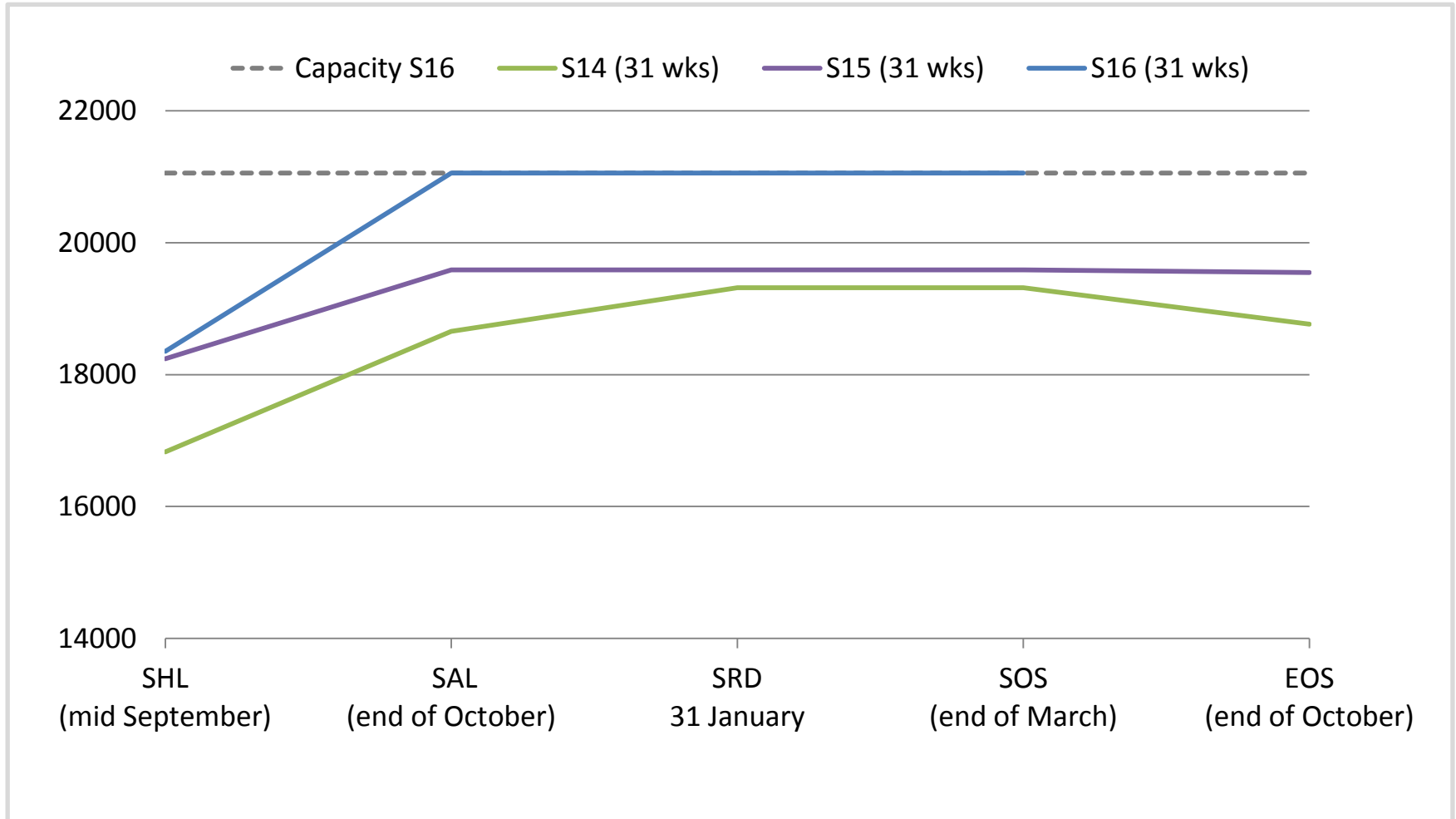


Slot allocation Eindhoven Airport

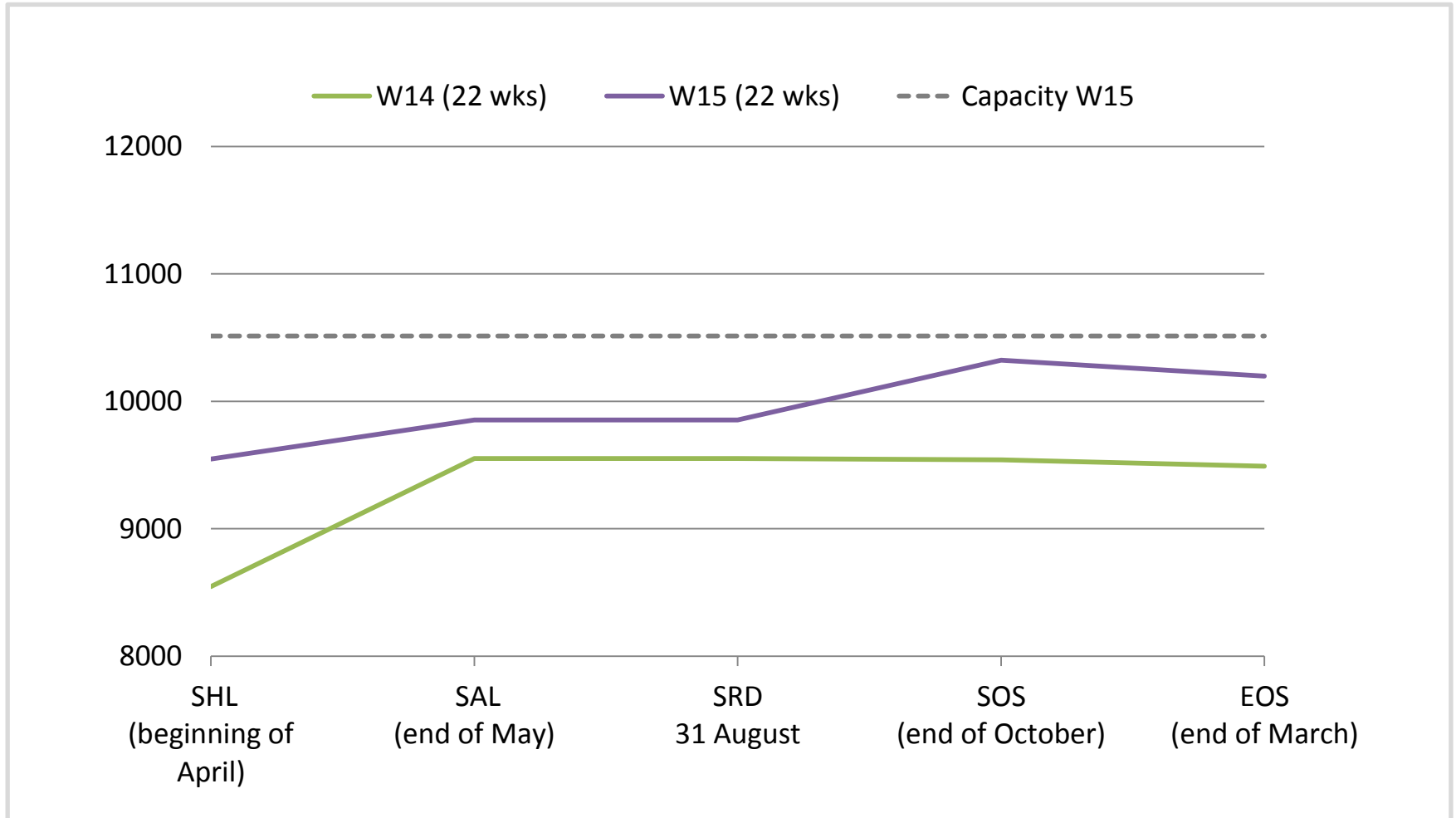
Caroline Ditvoorst
Managing Director

www.slotcoordination.nl

1. Slot allocation figures S15/S16



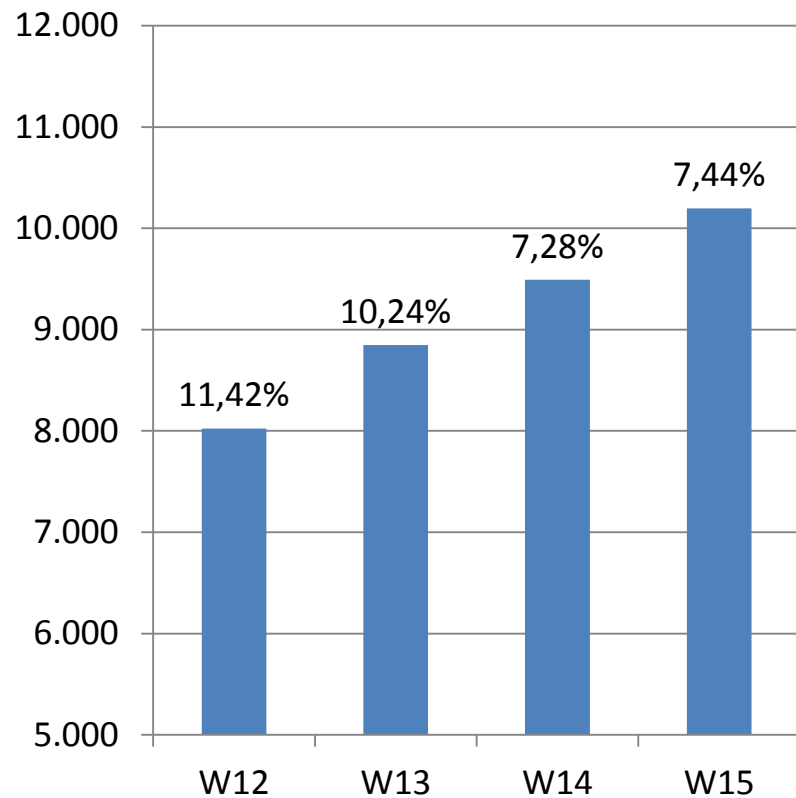
2. Slot allocation figures W15



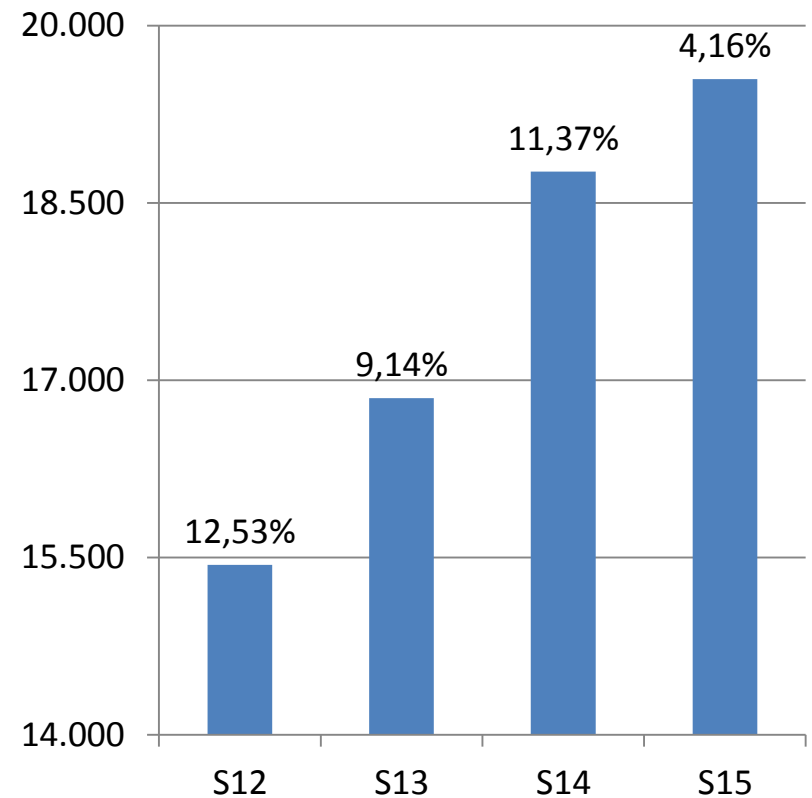
3. Realisation commercial aviation



Winter season (22 wks)



Summer season (corrected 31 wks)



Graphs show actual number of movements (commercial aviation). Percentages show growth w.r.t. previous season.

4. General and Business Aviation

- Currently 1560 slots are available for general and business aviation on a yearly basis.
- These slots are allocated according to the “Temporary Policy Regulation General and Business Aviation Eindhoven Airport 2016”.
- In 2015 one operator instituted legal proceeding against ACN because of this regulation.
- The court decided that ACN must fully apply EU Council regulation 95/93 as per 30 October 2016.
- Based on this court decision and on recent infrastructural changes for GA/BA at EIN, the Ministry of Transport concluded that art. 6 of EU Council Regulation 95/93 allows to exclude GA/BA from the Regulation.
- An alternative PPR procedure is being developed by Eindhoven Airport, to be presented in May 2016 and to come into effect as per the start of W16.
- Hence it is expected that GA/BA will no longer be slot coordinated as per W16.